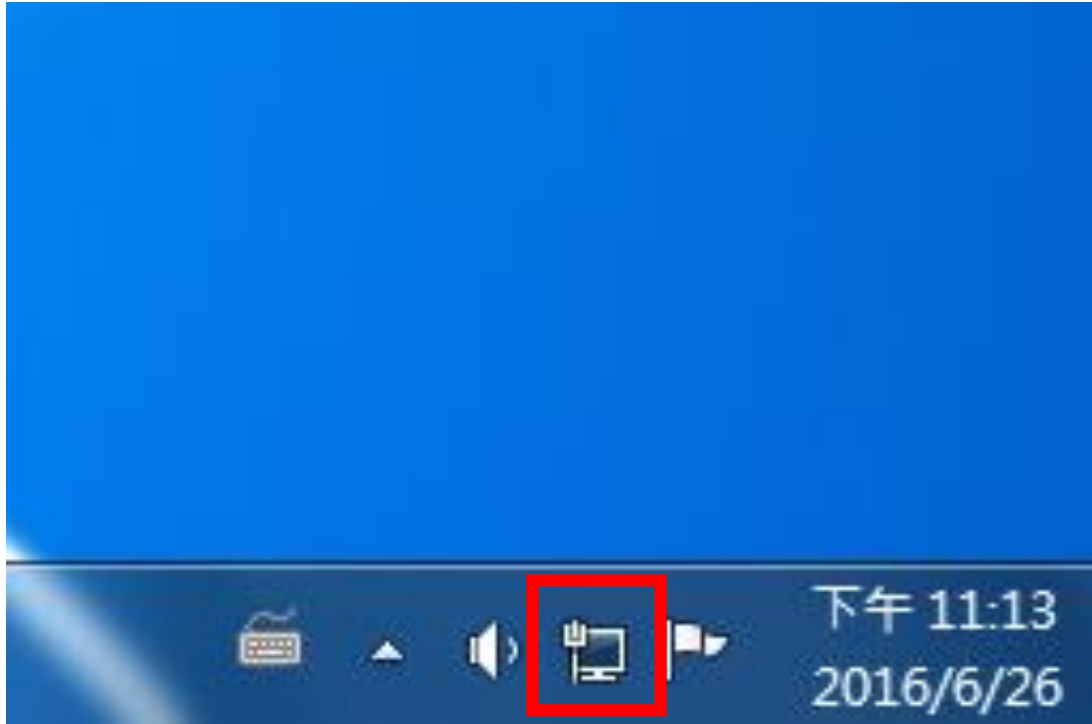


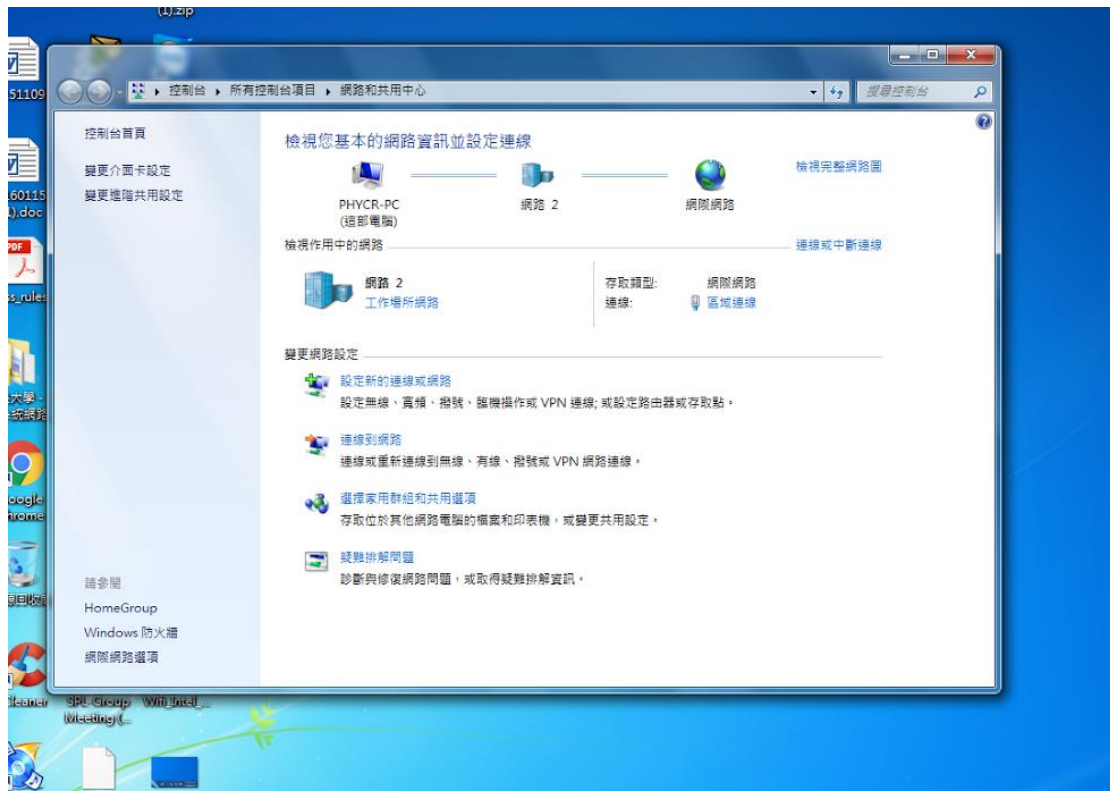
IP 設定教學

設定方式(windows, 如果不是請回 call 電腦室詢問)

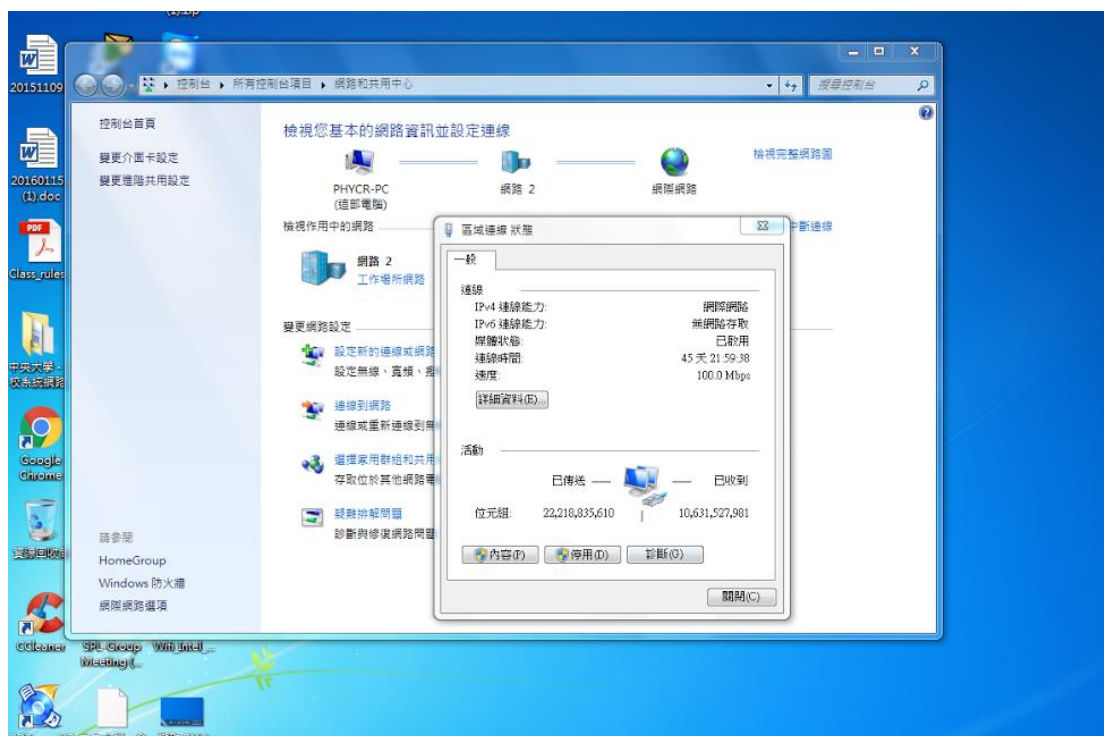
step1: 找到右下角網路與共用中心



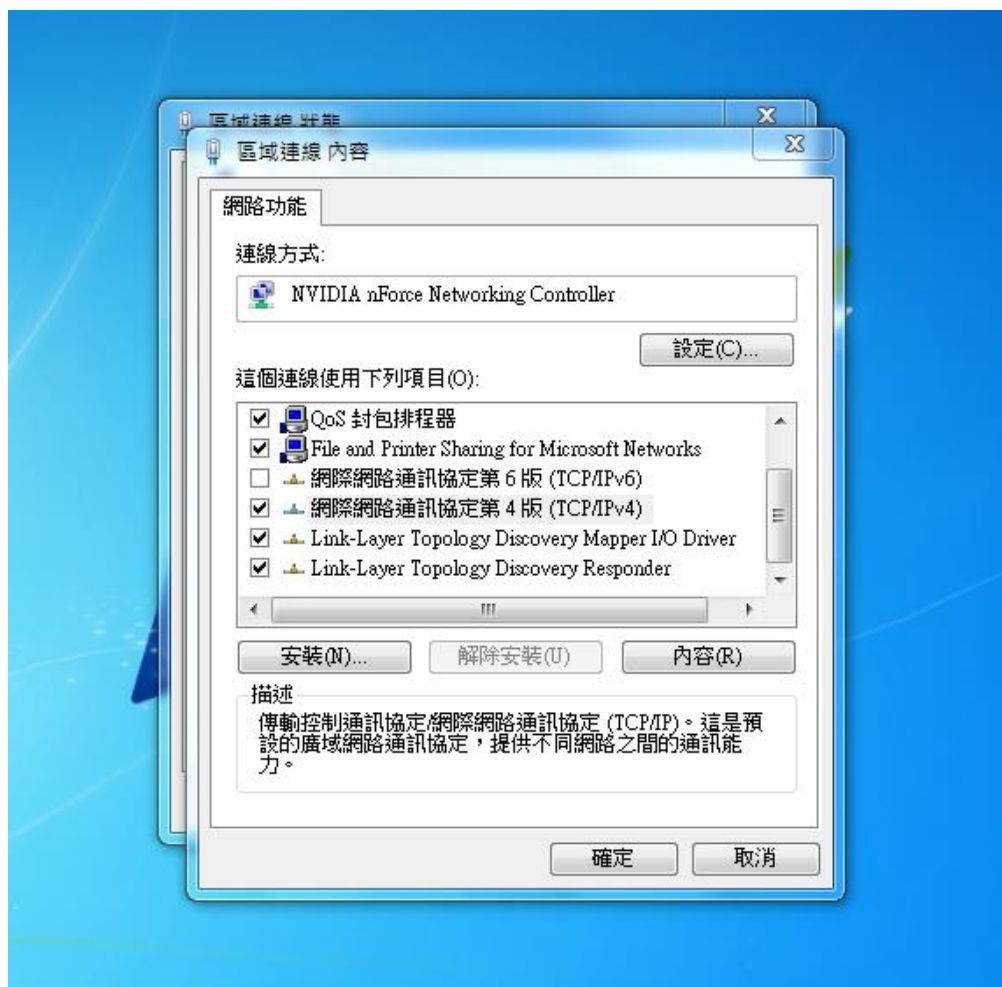
step2: 開啟後點選"區域連線"



step3: 點選"內容"



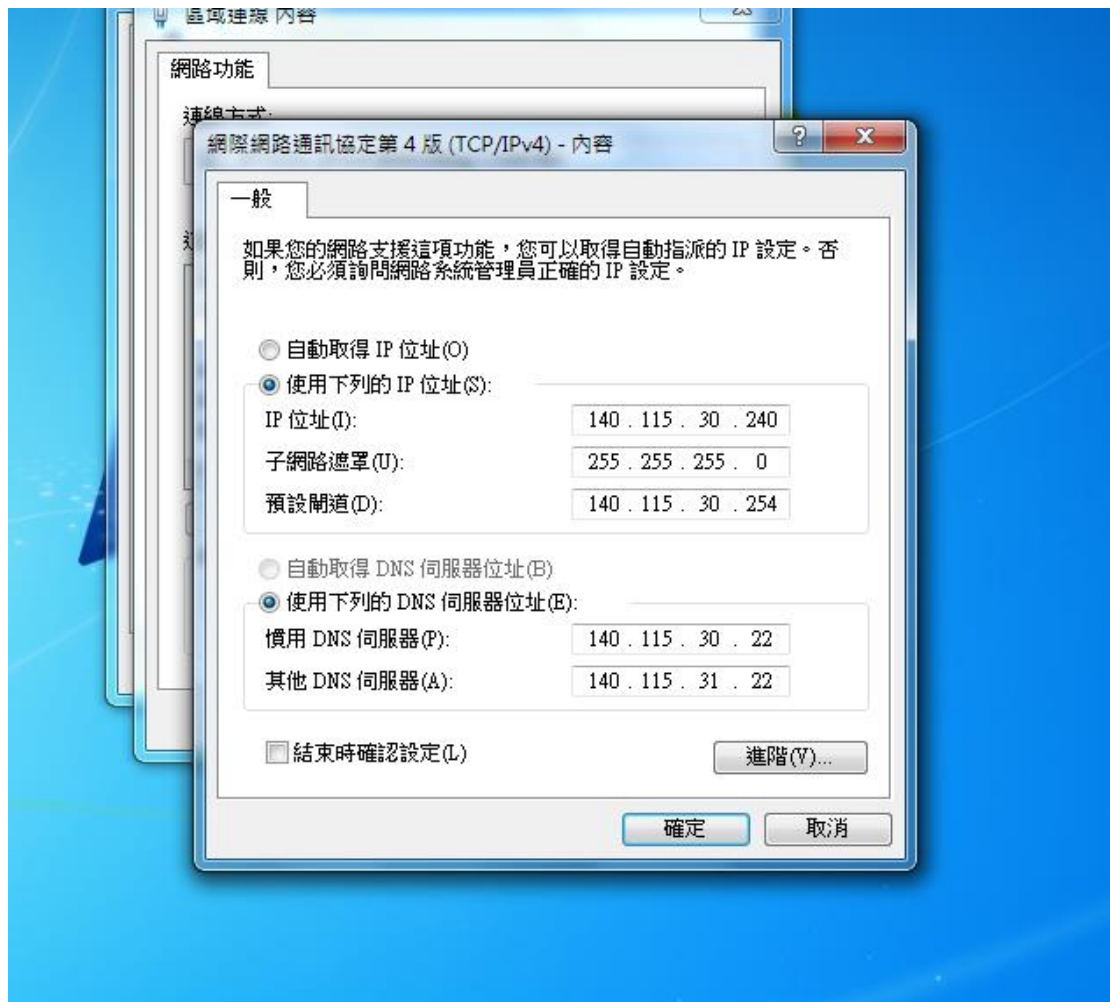
step4: 點選 TCP/IPv4 並按內容



step5: 將您申請 ip 打上去 其他如子網路遮罩和 DNS 照圖上設定
預設閘道:

For 140.115.30.XXX 140.115.30.254

140.115.31.XXX 140.115.31.254



這樣就 OK 了, 有問題請回 call 電腦室